

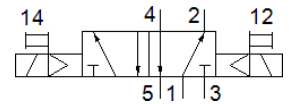
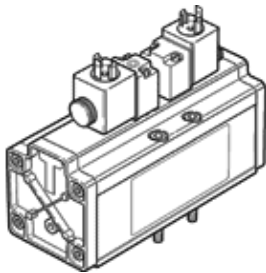
solenoid valve

JMDH-5/2-3/4-D-4-24DC

Part number: 12458

FESTO

With pilot valve and manual override, no socket connector



Data sheet

Feature	Value
Valve function	5/2 bistable
Type of actuation	electrical
Width	76 mm
Standard nominal flow rate	6,000 l/min
Operating pressure	2 ... 16 bar
Design structure	Piston slide
Protection class	IP65
Nominal size	18 mm
Grid dimension	82 mm
Exhaust-air function	throttleable
Sealing principle	soft
Assembly position	Any
Conforms to standard	ISO 5599-1
Manual override	Pushing
ISO code	455
Type of piloting	Piloted
Pilot air supply	Internal
Flow direction	non reversible
Overlap	Positive overlap
Switching time reversal	40 ms
Duty cycle	100 %
Max. positive test pulse with logic 0	4,300 µs
Max. negative test pulse with logic 1	2,100 µs
Characteristic coil data	24 V DC: 6.8 W 48 V AC: 50/60 Hz, pick-up power 14.5 VA, holding power 9.9 VA
Operating medium	Compressed air in accordance with ISO8573-1:2010 [7:4:4]
Note on operating and pilot medium	Lubricated operation possible (subsequently required for further operation)
Medium temperature	-10 ... 60 °C
Sound pressure level	85 dB(A)
Ambient temperature	-10 ... 50 °C
Product weight	2,600 g
Electrical connection	Per DIN EN 175301-803
Mounting type	On sub-base With through-hole and screw
Pilot exhaust port 82	M5
Pilot exhaust port 84	M5
Pneumatic connection, port 1	Connection plate size 4 as per ISO 5599-1
Pneumatic connection, port 2	Connection plate size 4 as per ISO 5599-1
Pneumatic connection, port 3	Connection plate size 4 as per ISO 5599-1
Pneumatic connection, port 4	Connection plate size 4 as per ISO 5599-1
Pneumatic connection, port 5	Connection plate size 4 as per ISO 5599-1
Materials note	Conforms to RoHS
Material seals	NBR
Material housing	Aluminium